



TETRA-CHEM INDUSTRIES LTD.

271 INGERSOLL ST. S.
INGERSOLL, ONTARIO
CANADA N5C 3J7

TEL: (519) 485-4370
TOLL FREE: (888) 658-5515
FAX: (855) 762-4446
EMAIL: info@tetra-chem.com
WEB SITE: www.tetra-chem.com

SPECIALTY CHEMISTRY

WASTE MANAGEMENT

APPLICATION TECHNOLOGY

INNOVATIVE ENGINEERING

Product Application Presentation

Product Identifier:

TCI 540 H.D.

Process Identifier: Biodegradable heavy duty cement, lime, scale, concrete and rust remover (ready to use)

Product Presentation

TCI 540 H.D. is a ready to use concentrated complex liquid formulation of environmentally friendly non-fuming, mild odour organic and inorganic acids with stable biodegradable wetting agents for clean-up of residual lime, mortar, concrete and calcium chloride deposits.

The performance of this product lies with the application method and retention time compared to conventional products.

TCI 540 H.D. is inhibited against metal substrate corrosion by 99.9% except on aluminum. This product can be used indoors without the staff being overcome by fumes from muriatic acid.

Process Introduction

TCI 540 H.D. spray formula effectively penetrates light to heavy deposits of residual cement, concrete, mortar, calcium chloride efflorescence, rust, scale, lime, drywall compound, stucco stains and plaster with minimal effort from 1 hour to overnight depending on composition and thickness. Concrete products affected by this formulation turns hard composition into soft mud depending on exposure time.

It is designed for the construction industry to assure that equipment used in hauling cement, on-site process concrete mixers, ready-mix trucks and chutes are in good working condition for each batch and during batching. It is used for the clean-up of splatter, tools, forms, wheelbarrows, etc.

Packaging & Ordering

1,000 L TOTE Code: 540-BULK

Application Procedure

This procedure is for trained personnel only

Large areas, tools and equipment are best for spray or foam cleaning methods:

To start the cleaning process, set up the manufacturer's approved chemical applicator system. The system draws the cleaner directly from the shipping container and delivers it through a variable length chemical resistant discharge hose directly to the affected equipment without the cleaning crew having to handle or come in close proximity with a hazardous situation. The application is automatically controlled by the flow on demand at the shut-off valve or the trigger applicator wand.

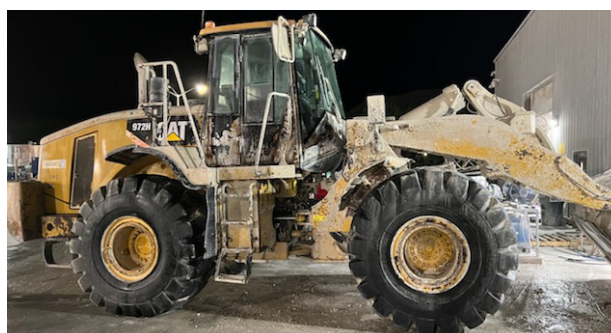


Notice.....

Do not spray TCI 540 H.D. directly onto a hot aluminum surface since it will result in stains. Use a pressure washer with a 2000-3000 psi and 4 gpm operating capacity. Be your own judge as to the best time for the procedure. The best time and place is in a controlled environment. Now apply the chemical solution as a spray or foam to the entire surface area starting from the bottom and working up. Assure complete and even spray/foam coverage so that the entire surface is done at the same time. Once the application is complete, re-apply the product to the remaining heavy encrustations and allow approximately a 1 hour or overnight chemical exposure time. Exposure time is directly proportional to soil thickness. This cleaning process does not generate a hazardous waste.



**PRECAUTION
RETRACT ALL
HYDRAULIC
CYLINDERS
TO PREVENT
ETCHING**



For industrial and institutional use only.

The information given herein is given in good faith but no warranty, expressed or implied is made.

Please call our technical support line at 1-888-658-5515 for solutions to your industry.

Copyright 2016 Tetra-Chem Industries Ltd. All rights reserved. Printed in Canada.

No part of this publication may be reproduced or distributed in any form or by any means, or stored in a database or retrieval system, without the prior written permission of the publisher.

