



## Product Application Presentation

**Product Identifier:**

# TCI 712 H.D.

**Process Identifier:** Brushless degreaser: weld spatter guard, engines, diesel exhaust smoke, side curtain trailer cleaner

### Product Presentation

**TCI 712 H.D.** features a new brushless concept in the form of a super concentrated green liquid formulation that combines the cleaning ability of biodegradable detergents, environmentally friendly sequestering agents and grease cutting alkalis. Designed with *phosphate free* chemistry. The water adjustable concentration strength is based on the degree of soil complexity encountered in the transportation industry (Trains, Trucks & Trailers, Utility Trucks, Aircraft, Ships & Boats, Agricultural Equipment e.g. Livestock and Dry Feed Bulk Carriers, Buses, RVs, Cars and Vans) at ambient temperatures. Safe on all common surfaces when used according to directions.

#### TRAILER TARP CLEANING

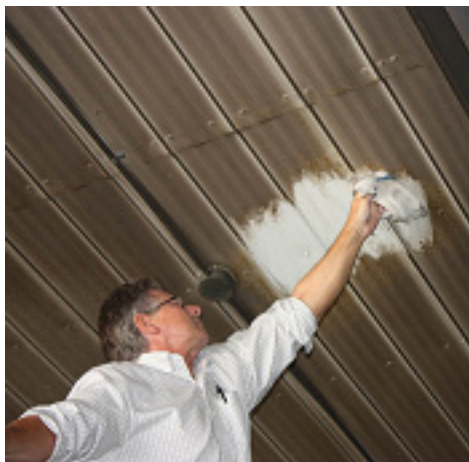


### Process Introduction

**TCI 712 H.D.** is designed for brushless vehicle washing when applied with the manufacturer's approved stationary Chemical Proportioner Applicator System (See Brochure) and sprayed as a light mist directly from the mixing tank onto the surface to be cleaned. The pre-portioned solution breaks the soil matrix quickly which is then affected by a high pressure (2000-3000 psi) cold water rinse.

**TCI 712 H.D.** is ideal for removing heavy encrustation of mud, bug splatter, excreta and road film with ease, lime dust & oxides from all surfaces sensitive to acid type cleaning solutions, automotive exhaust soot, weld spatter guard, oil, grease including grime. The chemical solution rinses freely and is thus harmless to cold aluminum articles and paint over time. This formulation improves light reflectivity by leaving a rich luxurious sheen behind.

#### GARAGE WALL - EXHAUST SOOT - BEFORE/AFTER



### Process Specificity

Premix **TCI 712 H.D.** Concentrate with water to suit the application either manually or with the recommended chemical proportioner depending on soil complexity and accumulated build-up.

The process can be implemented for cleaning all types of painted surfaces, chrome, ferrous and non-ferrous metals (steel and copper), white metals (cold surface aluminum and magnesium) where daily or weekly maintenance will not tarnish or dull wheels, fuel tanks, bodies, stainless steel or truck accessories. Enormous time and labour savings are realized when the surface is rinsed with cold soft to medium hard water at 4 gpm and 2000-3000 psi.

#### GARAGE WALL - EXHAUST SOOT - BEFORE/AFTER



#### COMPLIMENTS OF ARNOLD BELORE

**For industrial and institutional use only.**

The information given herein is given in good faith but no warranty, expressed or implied is made.

Please call our technical support line at 1-888-658-5515 for solutions to your industry.

Copyright 2016 Tetra-Chem Industries Ltd. All rights reserved. Printed in Canada.

No part of this publication may be reproduced or distributed in any form or by any means, or stored in a database or retrieval system, without the prior written permission of the publisher.